



SPARE PARTS EXPLODED VIEW  
WALL-HUNG GAS BOILERS

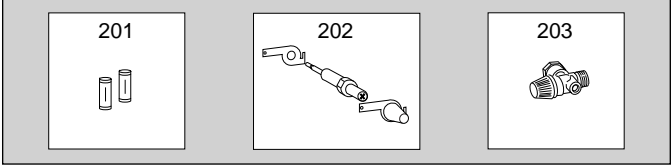
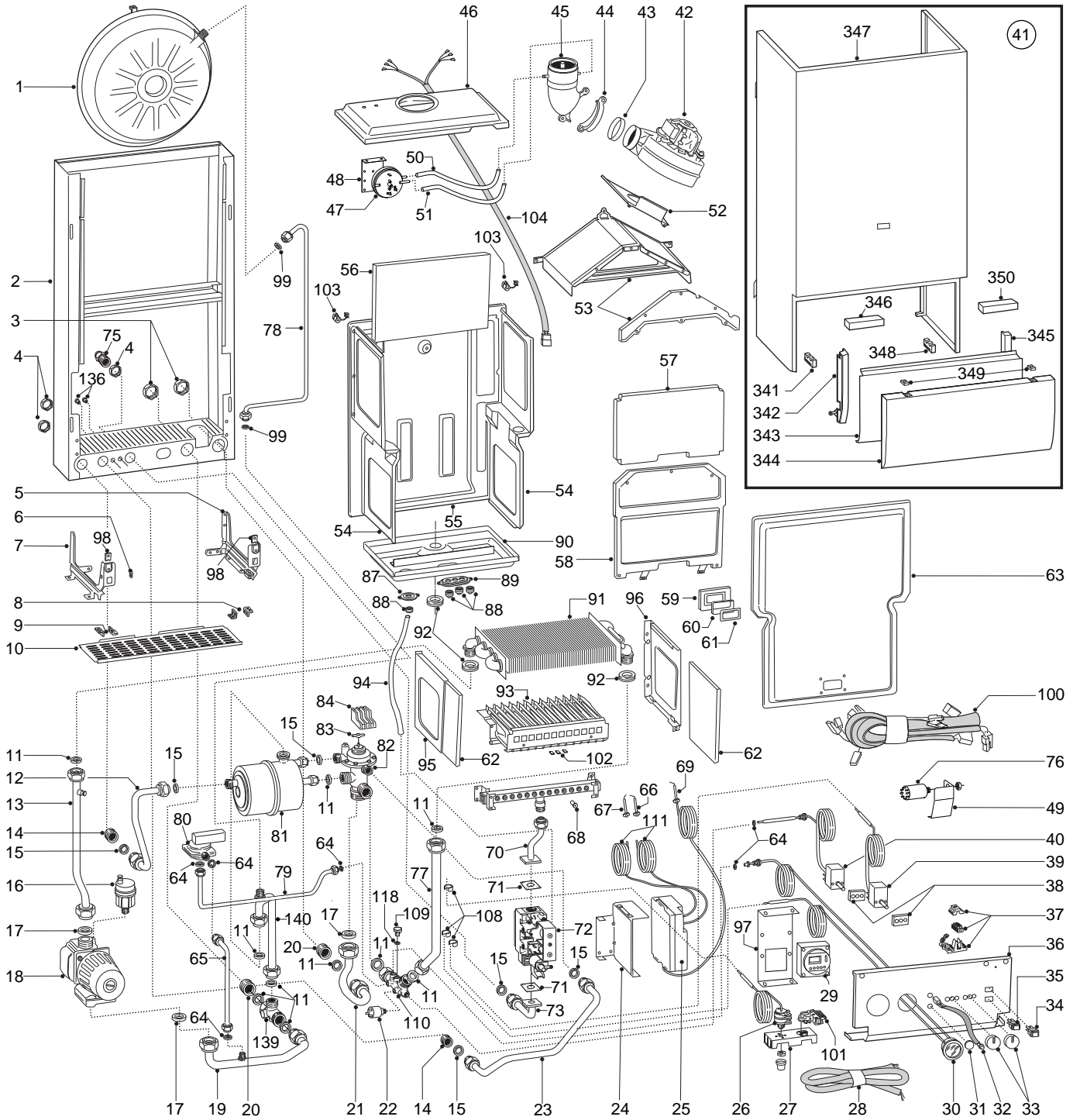
Models

**SX 20 MFFI CE**

---



MODELS	CODE	SERIAL NO. VALIDITY	REF.
SX 20 MFFI CE	534087	96010000	A
SX 20 MFFI CE LPG	534088	96010000	B



PART	CODE	DESCRIPTION	REF.	NOTE
1	564492	Expansion vessel		
2	571914	Boiler frame		
3	573523	Securing nut 3/4"		
4	573530	Securing nut 1/2"		
5	569539	Right holder for control panel		
6	569604	Earth symbol		
7	569540	Left holder for control panel		
8	566093	Right hinge		
9	569192	Left hinge		
10	570595	Grill		
11	573520	Gasket 3/4"		
12	569527	D.H.W. pipe		
13	570617	Pipe (pump to main exchanger)		
14	573531	Nipple 1/2"		
15	573528	Gasket 1/2"		
16	564524	Automatic air release valve		
17	569387	Gasket 1"		
18	570590	Pump		
19	570619	Pipe (C.H. return)		
20	573524	Nipple 3/4"		
21	570721	Pipe (C.H. flow)		
22	570605	Pump pressure switch		
23	573373	Pipe (D.C.W. inlet)		
24	570606	P.C.B. support		
25	951031	P.C.B.		
26	571829	Overheat thermostat		
27	569838	Plastic support		
28	570593	Mains supply cable		
29a	569538	Time clock (digital)		
29b	569294	Time clock (mechanical)		
30	571832	Temperature + pressure gauge		
31	569422	Plastic plug		
32	560171	Wired reset button		
33	569523	Control knob		
34	569424	On/off neon switch		
35	569423	Selector switch		
36	571677	Control panel		
37	570602	Terminal block		
38	564976	Thermostat holder spacer		
39	571830	Central heating (boiler) thermostat		
40	571831	Domestic hot water thermostat (6 Pin)		
41	571917	Full case assembled		
42	569431	Fan		
43	569433	Fan seal		
44	569434	Collar for venturi device		
45	572382	Venturi device		
46	571844	Sealed chamber cover		
47	571651	Air pressure switch		
48	571635	Air pressure switch bracket		
49	571790	Radio suppressor bracket		
51	571574	Silicone pipe - negative signal		
52	569429	Fan support plate		
53	570518	Flue hood		
54	569454	Sealed chamber panel		
55	571791	Sealed chamber back support		
56	573723	Back insulation panel		
57	573721	Front insulation panel		
58	572647	Front combustion chamber panel		
59	573566	View window holder		
60	573567	View window glass		
61	569442	View window seal		
62	573720	Side insulation panel		

PART	CODE	DESCRIPTION	REF.	NOTE
63	569605	Sealed chamber front panel		
64	569390	Gasket 1/4"		
65	570642	Pipe (upper main circuit flow switch)		
66	569560	Ignition electrode (R.H.)		
67	569561	Ignition electrode (L.H.)		
68	570248	Burner jet (1.25mm)	A	
68	570251	Burner jet (0.72mm)	B	
69	573441	Detection electrode		
70	570616	Pipe (gas valve to burner)		
71	569254	O ring		
72	570732	Gas valve (SIT tandem)		
73	571818	Pipe (gas inlet)		
76	572660	Radio suppressor		
77	570450	Pipe (central heating)		
78	573625	Pipe (expansion vessel)		
79	570747	Pipe (lower main circuit flow switch)		
80	570604	Main circuit flow switch		
81	566098	Secondary exchanger		
82	560166	Divertor valve		
83	569384	Pushing cap		
84	560146	Micro switch (triple)		
85	573824	Retaining clip (m/flow micro switch)		
86	570713	Main flow switch micro switch		
87	569457	Inspection plate (detection electrode)		
88	569458	Cable holders		
89	571612	Inspection plate (three hole)		
90	571611	Sealed chamber lower cover		
91	569487	Main exchanger		
92	569443	Silicone seal		
93	572271	Burner (Natural gas)	A	
93	572272	Burner (LPG gas)	B	
94	573576	Compensation tube		
95	570474	Panel (combustion chamber L.H.)		
96	570473	Panel (combustion chamber R.H.)		
97	569614	Time clock support		
98	570609	Spring clip		
99	573521	Gasket 3/8"		
100	571537	Wiring loom		
101	569391	Main power supply cord clamp		
102	570608	Spring clips for electrodes		
103	570561	Cord clamp		
104	572168	Fan supply cord		
107	570720	Service kit main flow switch		
108	571565	Phail clip		
109	570615	Brass plug		
110	570565	Multifunctional hydraulic connector		
111	569558	Cable (ignition electrode)		
114	569281	Burner jet (1.25mm) full kit	A	
114	569282	Burner jet (0.72mm) full kit	B	
115	570712	Sit tandem operator coils		
116	573740	Sit tandem modureg coil		
117	571409	Bolts and expansion caps full kit		
119	570741	Wall hanging bracket		
122	570781	Paper wall template		
123	573727	Manual vent cock		
124	570782	Valve kit: D.H.W. outlet pipe		
125	570783	Valve kit: D.H.W. inlet pipe		
126	570743	Valve kit: D.W inlet cock		

<b>PART</b>	<b>CODE</b>	<b>DESCRIPTION</b>	<b>REF.</b>	<b>NOTE</b>
127	570784	Valve kit: gas inlet pipe		
128	571000	Valve kit: gas cock		
129	570785	Valve kit: C.H. return pipe		
130	569292	Valve kit: safety valve		
131	570786	Valve kit: drainage pipe		
132	570744	Valve kit: C.H. flow-return cock		
133	570787	Valve kit: C.H. flow pipe		
134	570788	Plastic cap		
139	572653	C.H. return brass connection		
140	570452	Pipe (C.H. return to sec exchanger)		
201	950030	Fast fuse 2AT		
202	573745	Gas modulator cartridge		
341	569475	Female insert for L.H. hinge		
342	570628	Male insert for L.H. hinge		
342	570623	Plastic insert for case door		
343	570746	Case door		
345	570627	Male insert for R.H. hinge		
346	571507	Ball catch housing L.H.		
347	571825	Case		
348	569474	Female insert for R.H. hinge		
349	570630	Insert for ball catch		
350	571501	Ball catch housing R.H.		